

MAINTENANCE CONTRACTS

INVESTMENT PROTECTION

By ensuring technology is up to date, customers' investments are protected and downtime avoided

- Overnight replacement (continental US)
- 24/7 IP/ISDN testing facility
- One- and three-year coverage options



PROFESSIONAL SERVICES



COMPREHENSIVE SOLUTIONS

Extend reach and expand capabilities, without increasing overhead

- Consultations/troubleshooting
- On-site installations
- Network readiness assessments

SCORE MORE PAY LESS



POOL

Stay ahead and close more deals by using demos

- Flexible delivery options
- 100+ products (more added daily)
- Most already have licenses installed

SERVICE RENEWAL

PROACTIVE REPORTING

Increase revenue while customers retain uninterrupted support

- Notifications 90-days in advance
- Allows customers to budget
- Continued recurring-revenue

WITH SCANSOURCE TOTAL COVERAGE*

The same reliable coverage **PLUS** the potential for a larger return on your customer's investment. Service that goes beyond support and maintenance, so you get an edge on the competition.

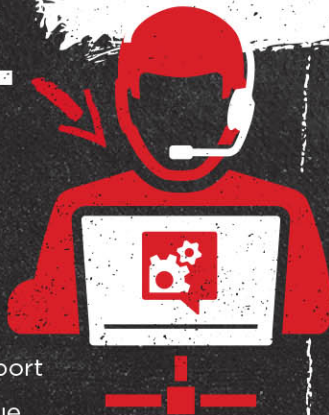
*ScanSource Total Coverage services may vary by individual supplier program

TECHNICAL SUPPORT

DEDICATED SUPPORT

Certified technicians available, pre- and post-sale

- Level 1/Level 2 unlimited support
- Live technicians—no call queue
- 77.25% cases solved same day



total coverage



DISCOVER MORE

scansource.com/totalcoverage | 877.847.7000